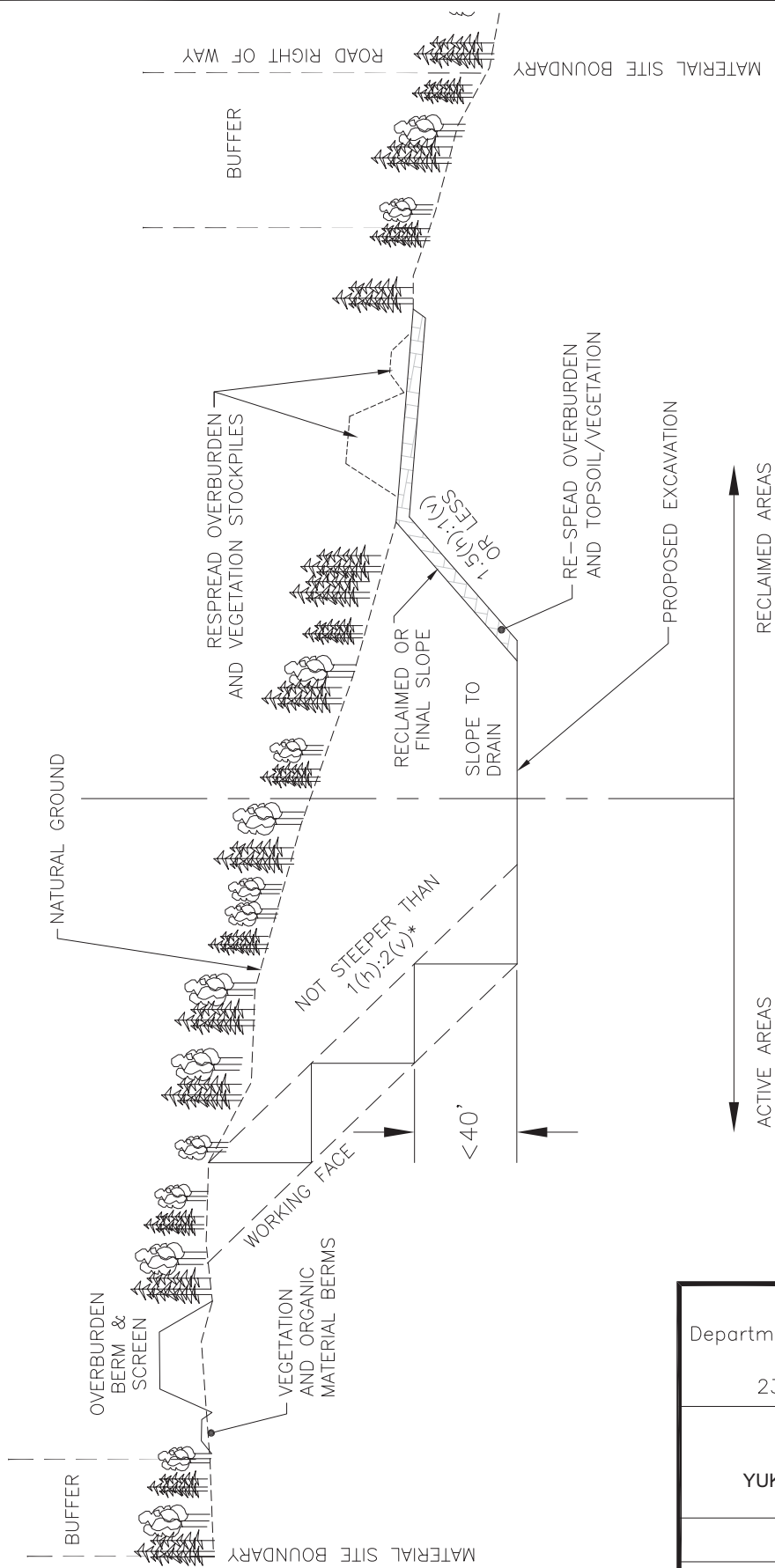


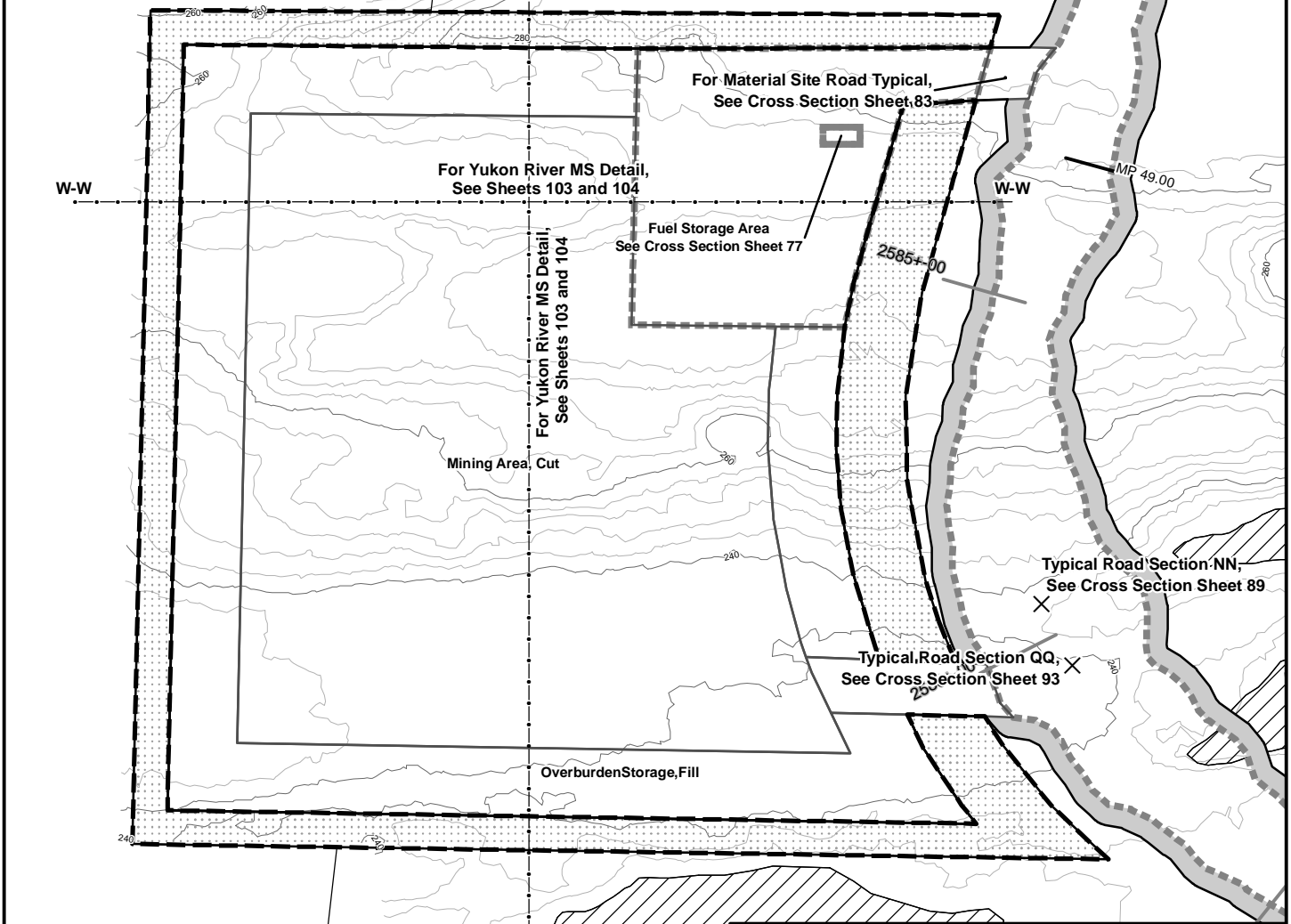
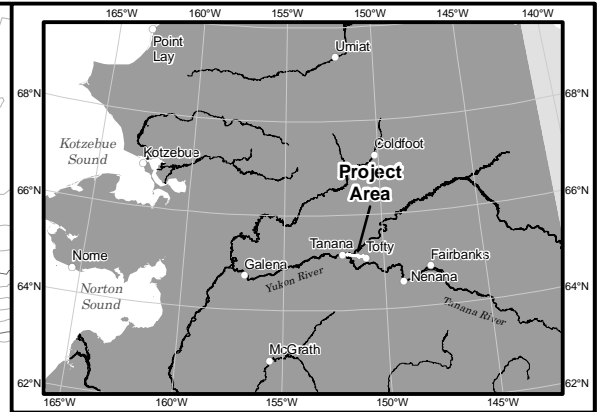
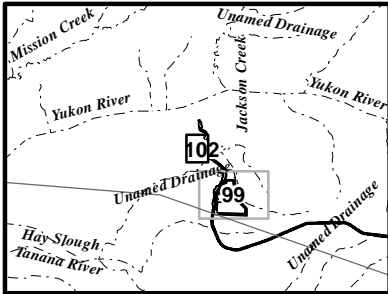
T:\Industrial Roads Project Files\Tanana Road\04_P&S\DELIVERABLES TO 3PP\Deliverables\Material Site Permit Drawing-YUKON BLUFFS (2) West, 19/Dec/12 09:46am



YUKON BLUFFS MATERIAL SITE
SECTION V-V'
NOT TO SCALE

PRELIMINARY

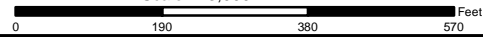
STATE OF ALASKA Department of Transportation and Public Facilities APPLICANT/AGENT: State of Alaska 2301 Peger Rd. Fairbanks, Ak 99709	
ROAD TO TANANA 61759 YUKON BLUFFS MATERIAL SITE, SECTION V-V'	
DATE: 12/21/2012	SHEET: 101 OF 110



Legend

- | | |
|------------------------------------------|-------------------------------------------------------------------------|
| Cut/Fill Boundary | Culvert: Type A & B Pipe
(See Cross Section Figures 70, 71, 72 & 73) |
| Vegetation Clearing | Culvert: Fish Pass Pipe
(See Cross Section Figures 94, 95, 72 & 73) |
| Vegetative Screen/Buffer | Typical Road Section Change |
| 3PPI Study Area Boundary
(12/17/2012) | MS Section Cut Lines |
| Material Site | 20ft Interval Contour |
| Wetland | 4ft Interval Contour |
| Upland | 3PPI Arcs (12/5/2012) |
| Wetland/Upland Mosaic | (All drainages are unnamed unless labeled on sheet) |
| Navigable Waters | |
| Other Waters | |
| Previously Disturbed | |

Scale 1:3,000



STATE OF ALASKA
Department of Transportation and Public Facilities

APPLICANT/AGENT: State of Alaska
2301 Peger Rd. Fairbanks, AK 99709

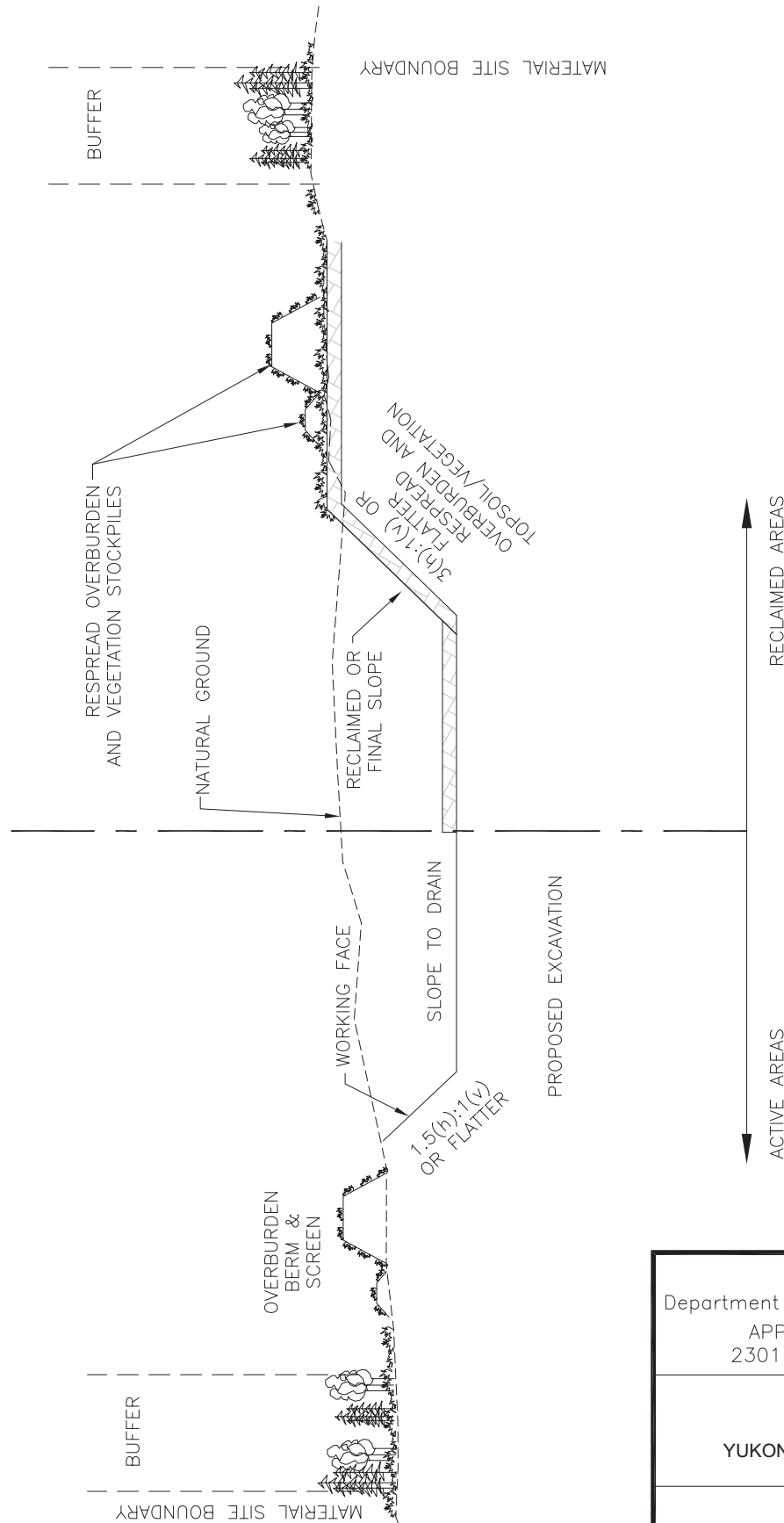
TANANA ROAD PROJECT
61759

Material Site Plan View, MP48.79 to 49.04
Yukon River Site Material Site

Tanana River, Bear Creek-Yukon River Basin

DATE: FEBRUARY 2013	SHEET: 102 of 110
---------------------	-------------------

T:\Industrial Roads Project Files\Tanana Road\04 PS&E\DELIVERABLES TO 3PP\Deliverables\Material Site Permit Drawing-YUKON RIVER SITE Web_19/Dec/12 09:46am

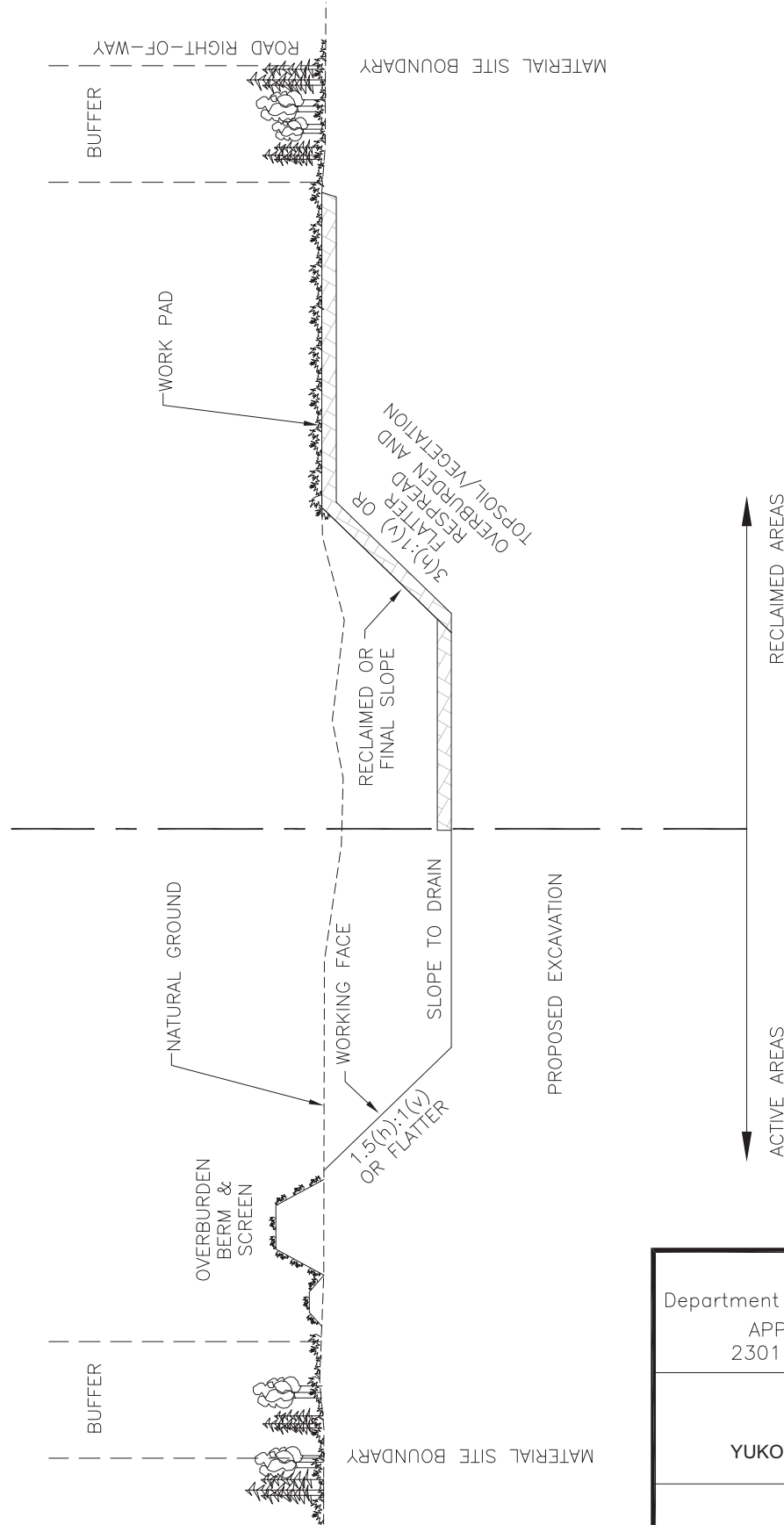


YUKON RIVER MATERIAL SITE
SECTION W-W'
NOT TO SCALE

PRELIMINARY

STATE OF ALASKA Department of Transportation and Public Facilities APPLICANT/AGENT: State of Alaska 2301 Peger Rd. Fairbanks, Ak 99709	
ROAD TO TANANA 61759 YUKON RIVER MATERIAL SITE, SECTION W-W'	
DATE: 12/21/2012	SHEET: 103 OF 110

T:\Industrial Roads Project Files\Tanana Road\04 PS&E\DELIVERABLES TO 3PP\Deliverables\Material Site Permit Drawing-YUKON RIVER SITE (2) West, 19/Dec/12 09:47am



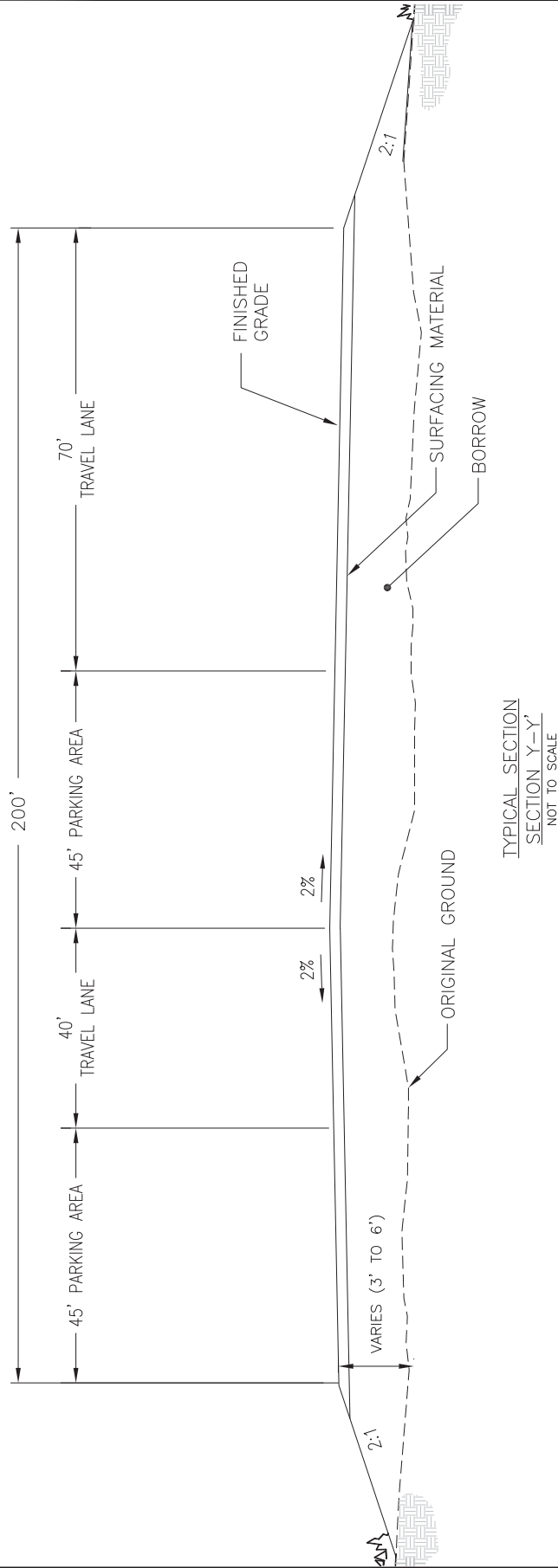
ACTIVE AREAS ← RECLAIMED AREAS →

YUKON RIVER MATERIAL SITE
SECTION X-X'
NOT TO SCALE

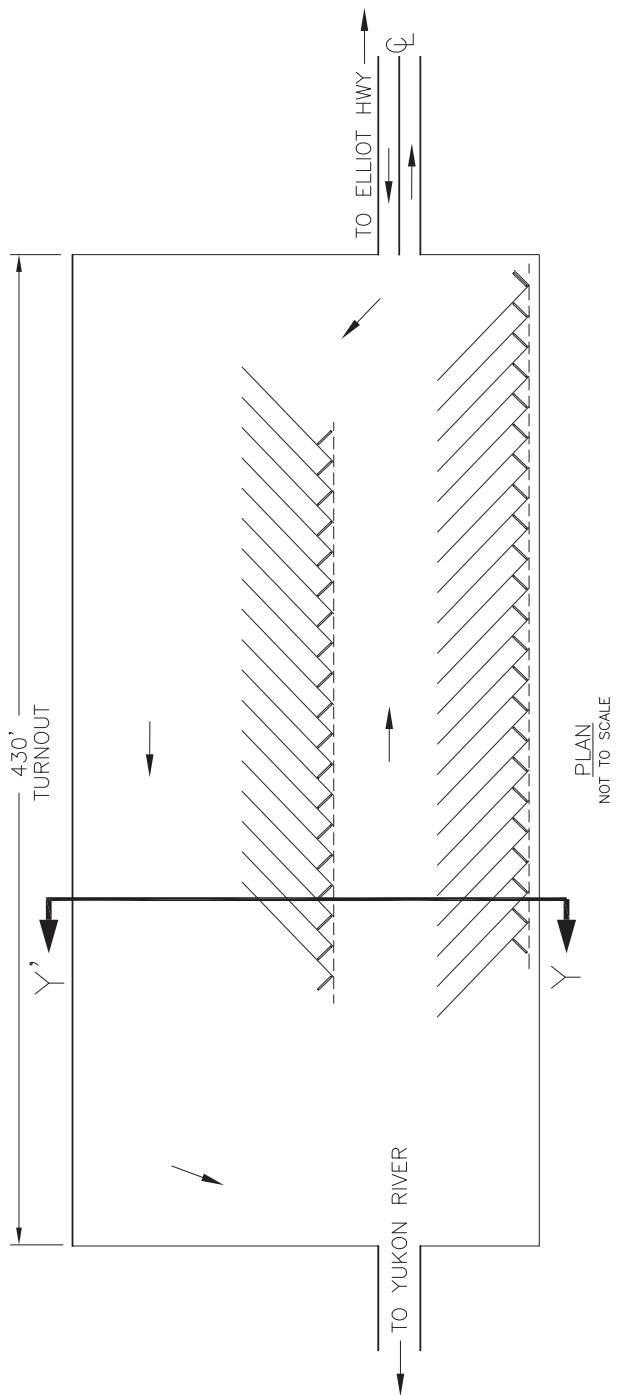
PRELIMINARY

STATE OF ALASKA Department of Transportation and Public Facilities APPLICANT/AGENT: State of Alaska 2301 Peger Rd. Fairbanks, Ak 99709	
ROAD TO TANANA 61759 YUKON RIVER MATERIAL SITE, SECTION X-X'	
DATE: 12/21/2012	SHEET: 104 OF 110

I:\Industrial Roads Project Files\Tanana Road\04_P&E\DELIVERABLES TO 3PP\Deliverables\Terminus\Typical-Turnout Wed, 19/Dec/12 09:48am



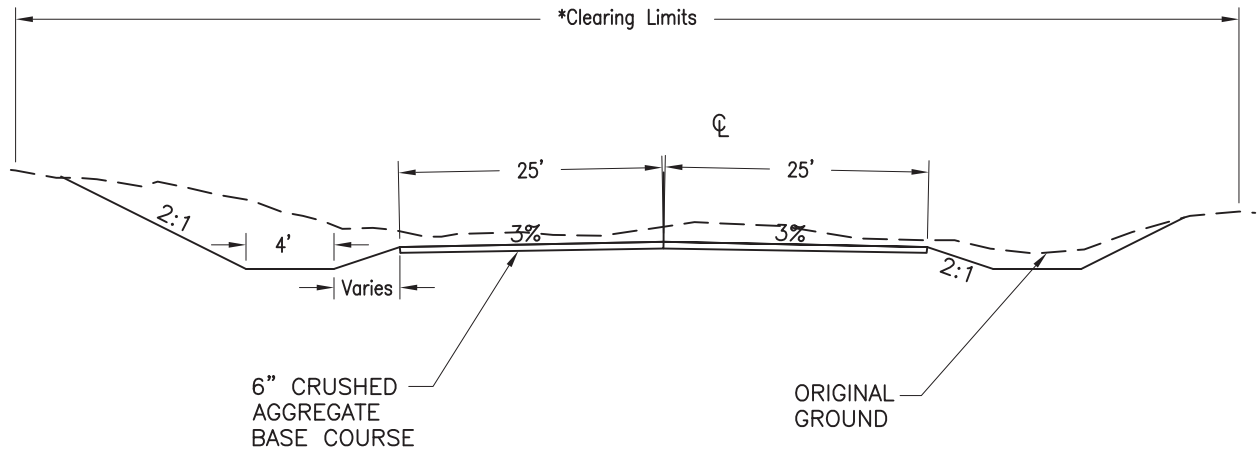
TYPICAL SECTION
SECTION Y-Y'
NOT TO SCALE



PLAN
NOT TO SCALE

STATE OF ALASKA Department of Transportation and Public Facilities APPLICANT/AGENT: State of Alaska 2301 Peger Rd. Fairbanks, AK 99709	
ROAD TO TANANA 61759 YUKON RIVER MATERIAL SITE, SECTION Y-Y'	
DATE: 12/21/2012	SHEET: 105 OF 110

TYPICAL ROAD SECTION
SECTION Z-Z'
NTS

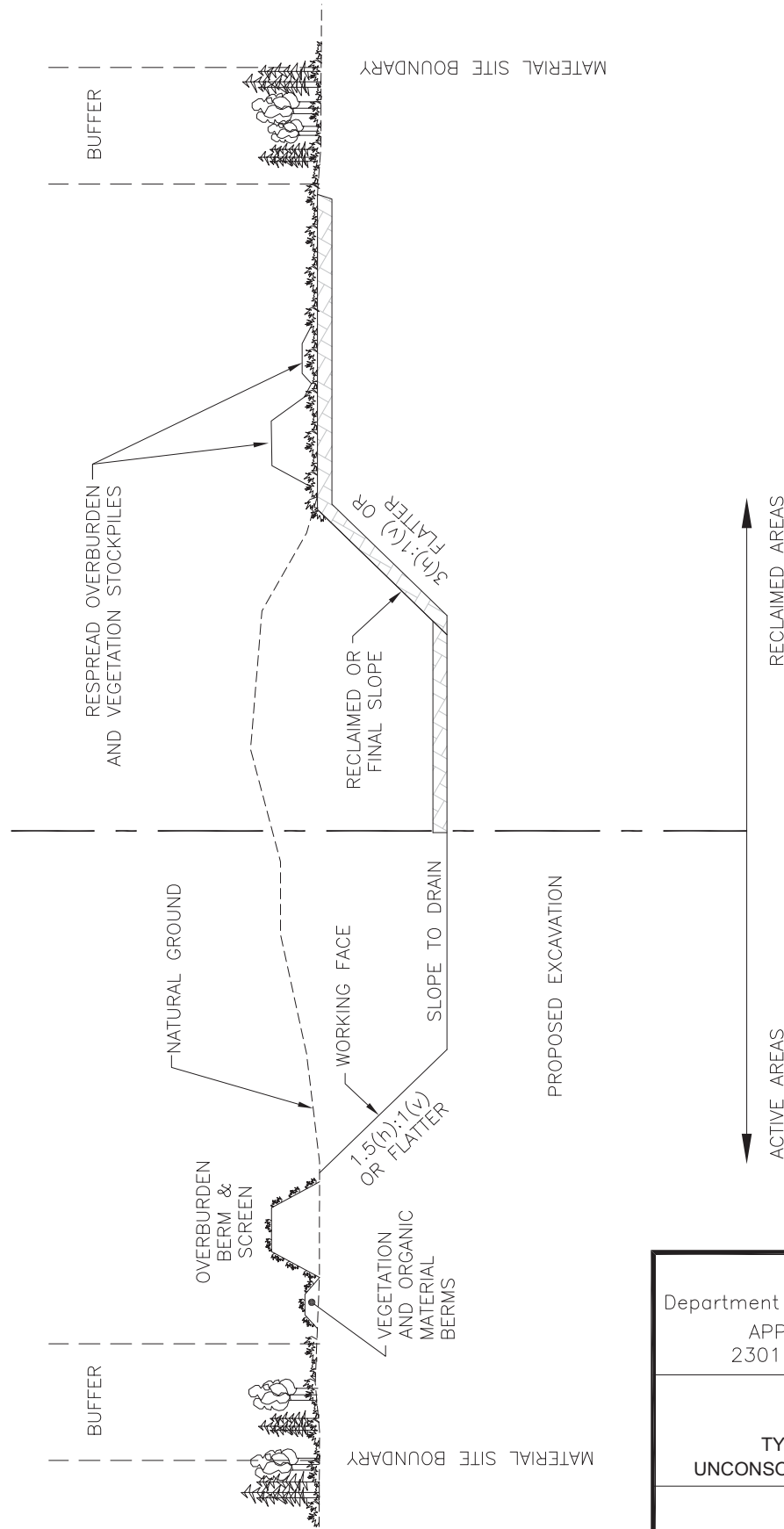


Notes:
* Clearing limits extend 10' beyond the tow

T:\Industrial_Roads_Project_Files\tanana_Road\04_PSAE\DELIVERABLES TO SPR\Deliverables\typical-yukon-terminus Mod_19/Dec/12 10:06am

STATE OF ALASKA Department of Transportation and Public Facilities APPLICANT/AGENT: State of Alaska 2301 Peger Rd. Fairbanks, Ak 99709	
ROAD TO TANANA 61759 TYPICAL ROAD SECTION, SECTION Z-Z'	
DATE: 12/21/2012	SHEET: 106 OF 110

T:\Industrial Roads Project Files\Tanana Road\04_P&CE\DELIVERABLES TO 3PP\Deliverables\Material Site Permit Drawing-DRY_Tue, 18/Dec/12 04:40pm



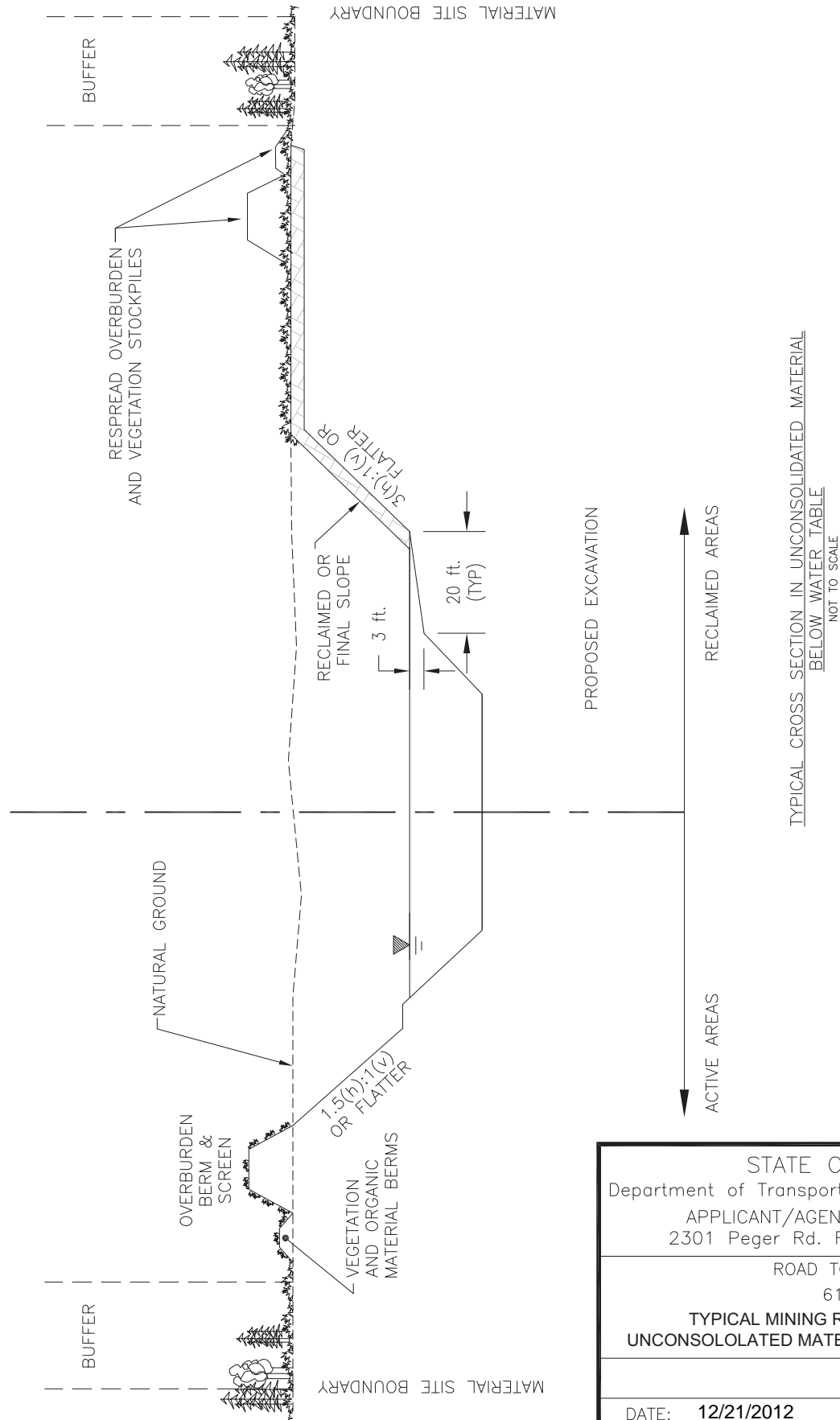
TYPICAL CROSS SECTION IN UNCONSOLIDATED MATERIAL ABOVE WATER TABLE
NOT TO SCALE

NOTE: MATERIAL SITE DIMENSIONS VARY BY SITE. SEE TABLE FOR ACREAGE BY SITE.

PRELIMINARY

STATE OF ALASKA Department of Transportation and Public Facilities APPLICANT/AGENT: State of Alaska 2301 Peger Rd. Fairbanks, Ak 99709	
ROAD TO TANANA 61759	
TYPICAL MINING RECLAMATION PLAN: UNCONSOLIDATED MATERIAL ABOVE WATER TABLE	
DATE: 12/21/2012	SHEET: 107 OF 110

T:\Industrial Roads Project Files\Tanana Road\04_P&S\DELIVERABLES TO 3PP\Deliverables\Material Site Permit Drawing-WET_Tue, 18/Dec/12 04:39pm

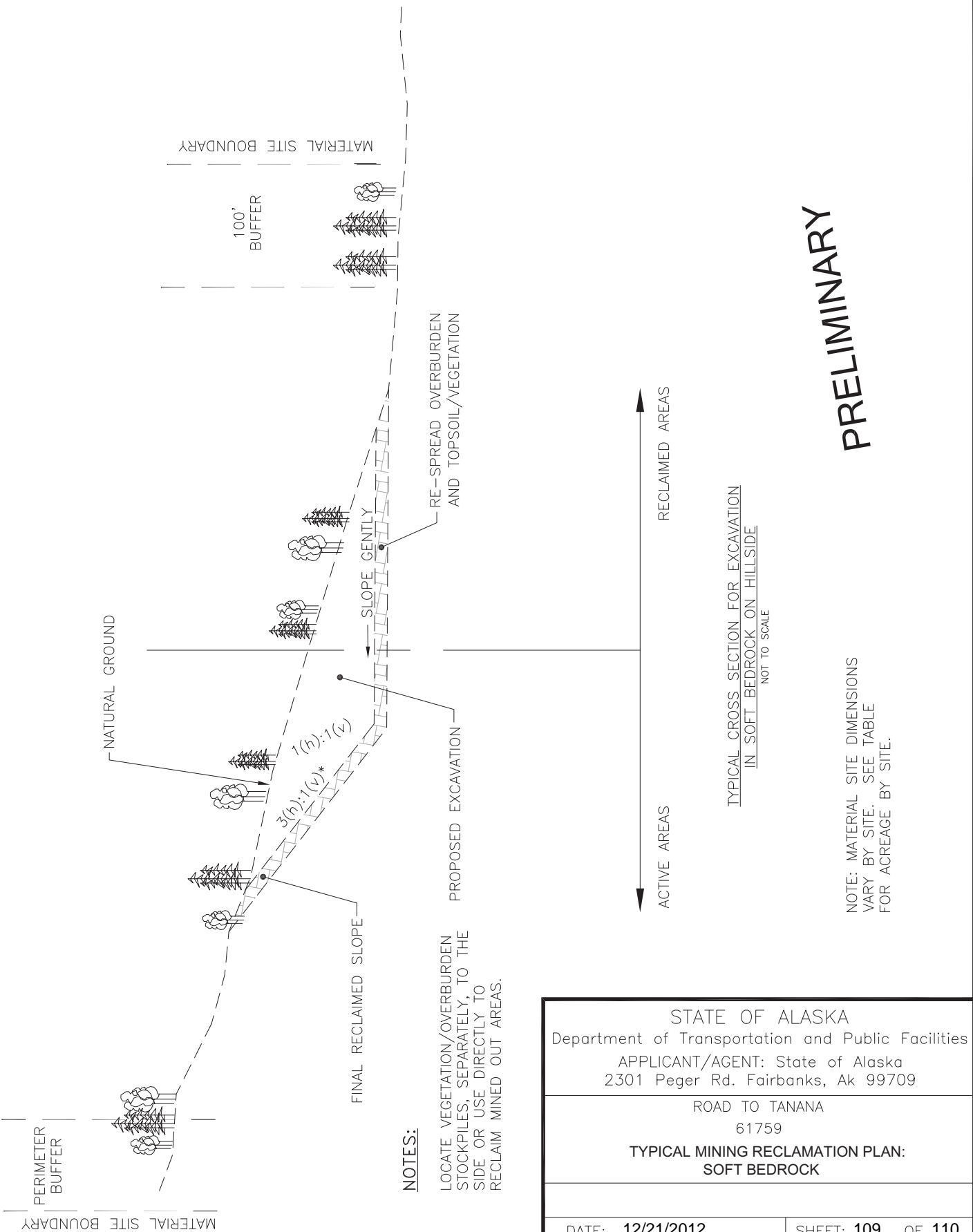


PRELIMINARY

NOTE: MATERIAL SITE DIMENSIONS VARY BY SITE. SEE TABLE FOR ACREAGE BY SITE.

STATE OF ALASKA Department of Transportation and Public Facilities APPLICANT/AGENT: State of Alaska 2301 Peger Rd. Fairbanks, AK 99709	
ROAD TO TANANA 61759	
TYPICAL MINING RECLAMATION PLAN: UNCONSOLIDATED MATERIAL BELOW WATER TABLE	
DATE: 12/21/2012	SHEET: 108 OF 110

T:\Industrial Roads Project Files\Tanana Road\04 PS&E\DELIVERABLES TO 3PP\Deliverables\material Site Rec Plan - Soft Bedrock-1 Tue, 18/Dec/12 04:41pm



NOTES:

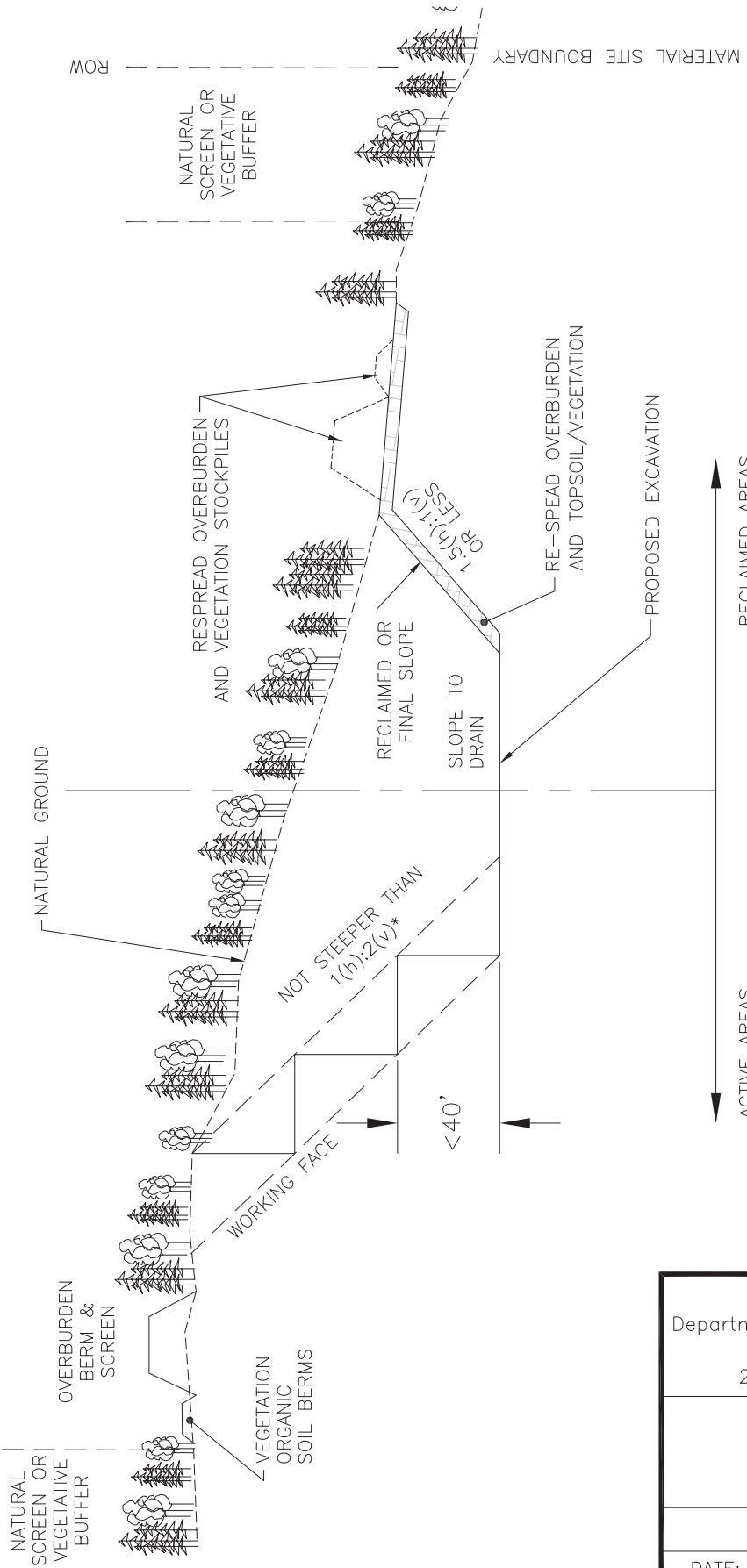
LOCATE VEGETATION/OVERBURDEN STOCKPILES, SEPARATELY, TO THE SIDE OR USE DIRECTLY TO RECLAIM MINED OUT AREAS.

TYPICAL CROSS SECTION FOR EXCAVATION IN SOFT BEDROCK ON HILLSIDE
NOT TO SCALE

PRELIMINARY

STATE OF ALASKA Department of Transportation and Public Facilities APPLICANT/AGENT: State of Alaska 2301 Peger Rd. Fairbanks, Ak 99709	
ROAD TO TANANA 61759	
TYPICAL MINING RECLAMATION PLAN: SOFT BEDROCK	
DATE: 12/21/2012	SHEET: 109 OF 110

F:\Industrial Roads Project Files\Tanana Road\04 PS&E\DELIVERABLES TO 3PP\DELIVERABLES\Material Site Permit Drawing-QUARRY TUE, 18/Dec/12 04:40pm



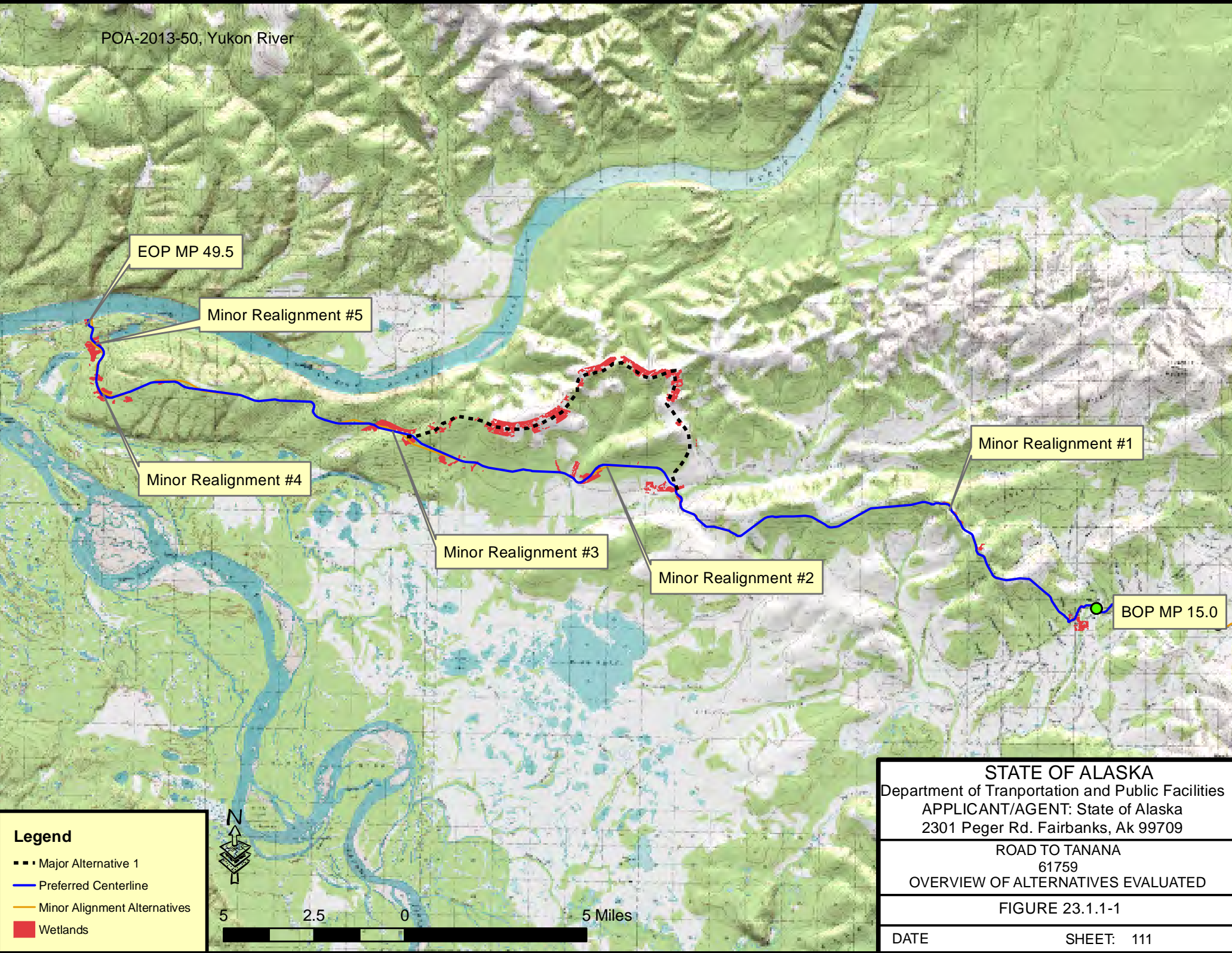
* MAXIMUM SLOPE ANGLE DEPENDS ON SITE-SPECIFIC PARAMETERS AND SHOULD BE DETERMINED FOR INDIVIDUAL SITES.

TYPICAL CROSS SECTION FOR QUARRY SITE
NOT TO SCALE

NOTE: MATERIAL SITE DIMENSIONS VARY BY SITE. SEE TABLE FOR ACREAGE BY SITE.

PRELIMINARY

STATE OF ALASKA Department of Transportation and Public Facilities APPLICANT/AGENT: State of Alaska 2301 Peger Rd. Fairbanks, Ak 99709	
ROAD TO TANANA 61759 TYPICAL MINING RECLAMATION PLAN: QUARRY SITES	
DATE: 12/21/2012	SHEET: 110 OF 110



Legend

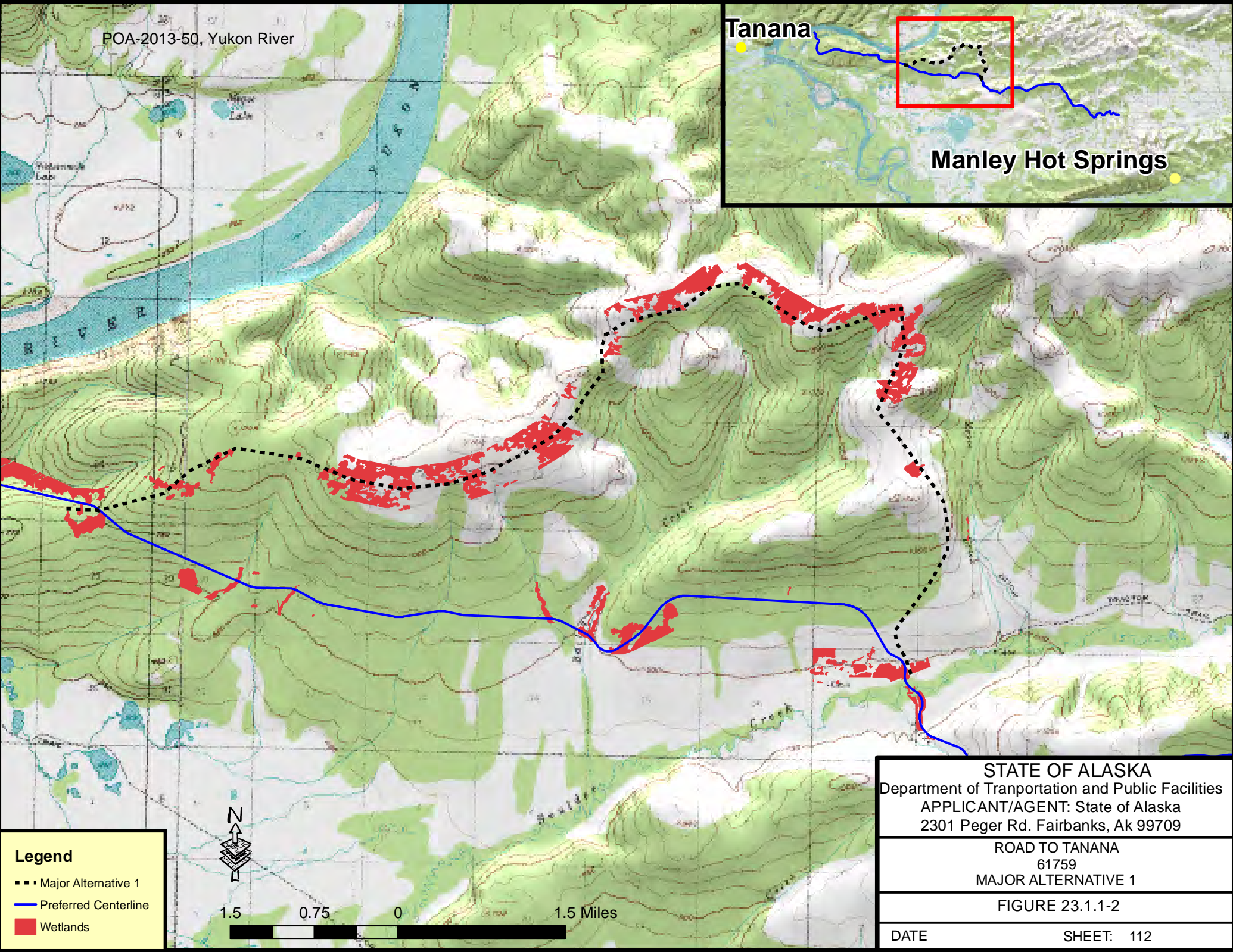
- Major Alternative 1
- Preferred Centerline
- Minor Alignment Alternatives
- Wetlands



STATE OF ALASKA Department of Transportation and Public Facilities APPLICANT/AGENT: State of Alaska 2301 Peger Rd. Fairbanks, Ak 99709	
ROAD TO TANANA 61759 OVERVIEW OF ALTERNATIVES EVALUATED	
FIGURE 23.1.1-1	
DATE	SHEET: 111

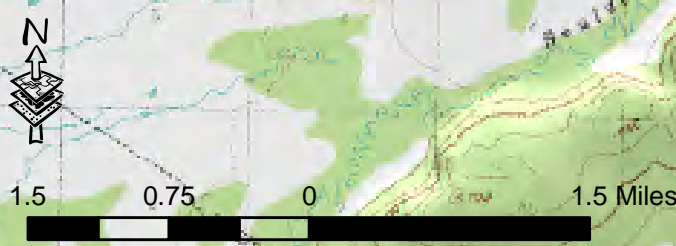
Tanana

Manley Hot Springs



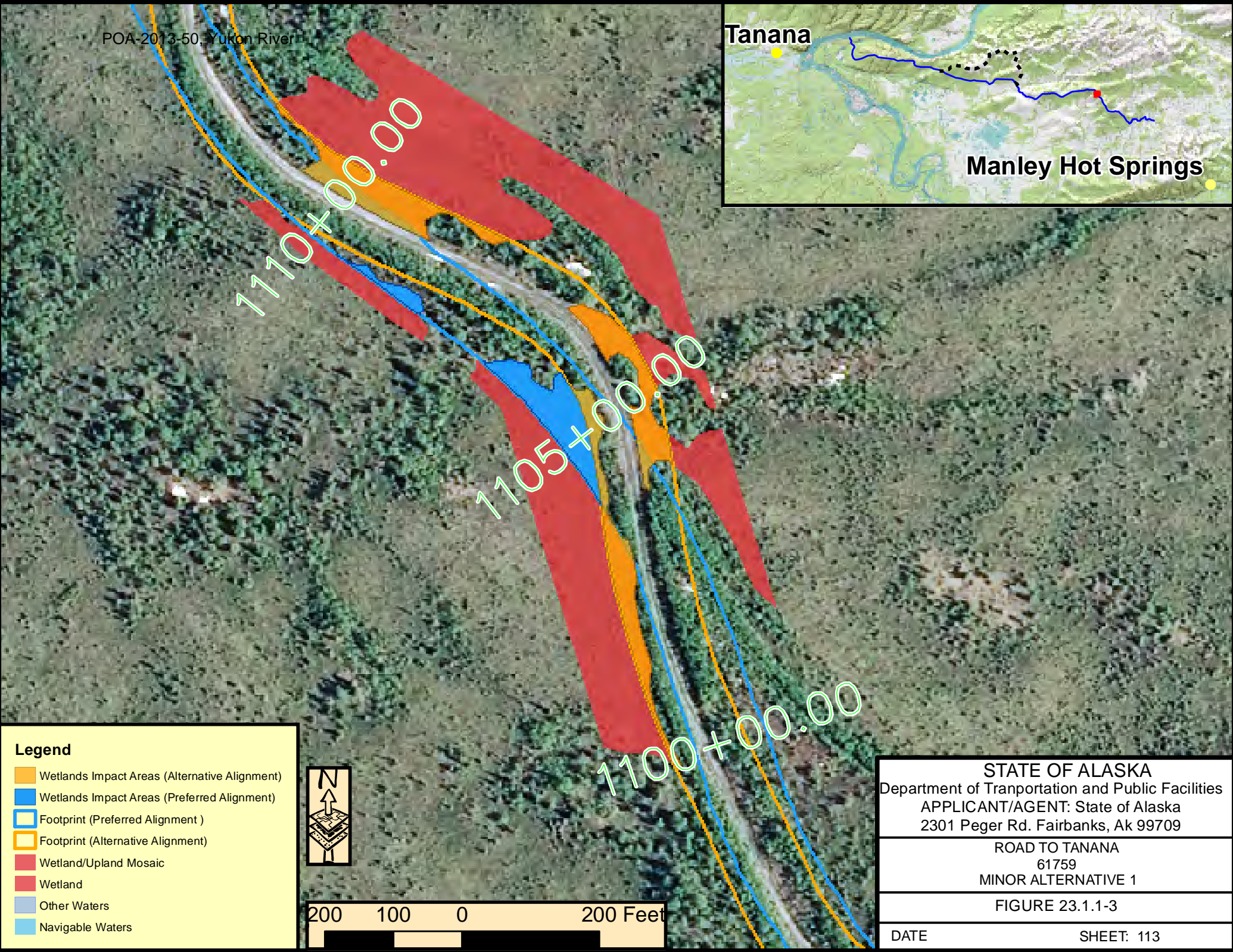
Legend

- Major Alternative 1
- Preferred Centerline
- Wetlands



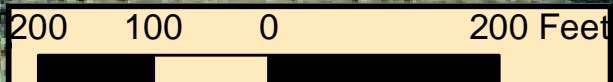
STATE OF ALASKA Department of Transportation and Public Facilities APPLICANT/AGENT: State of Alaska 2301 Peger Rd. Fairbanks, Ak 99709	
ROAD TO TANANA 61759 MAJOR ALTERNATIVE 1	
FIGURE 23.1.1-2	
DATE	SHEET: 112

POA-2013-50, Yukon River

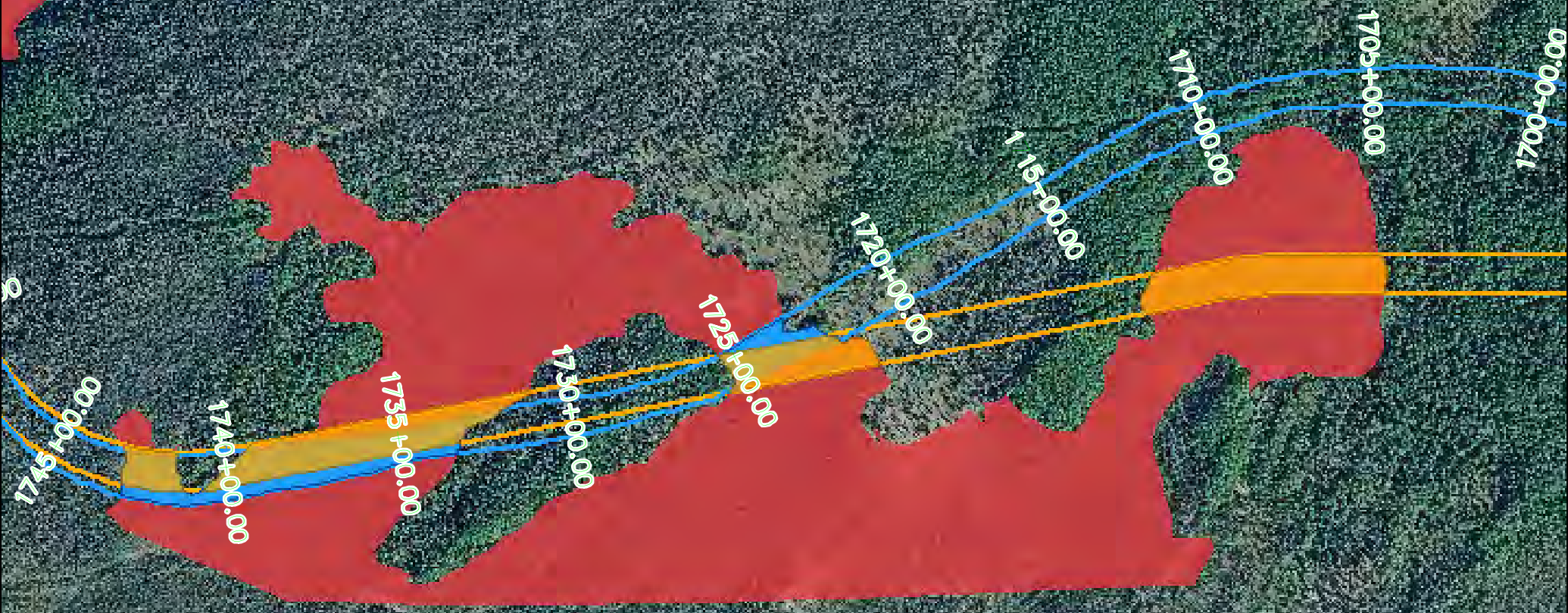


Legend

- Wetlands Impact Areas (Alternative Alignment)
- Wetlands Impact Areas (Preferred Alignment)
- Footprint (Preferred Alignment)
- Footprint (Alternative Alignment)
- Wetland/Upland Mosaic
- Wetland
- Other Waters
- Navigable Waters

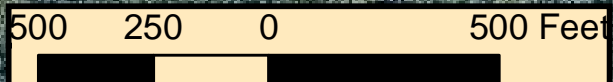
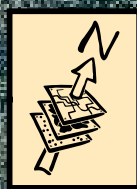


STATE OF ALASKA	
Department of Transportation and Public Facilities	
APPLICANT/AGENT: State of Alaska	
2301 Peger Rd. Fairbanks, Ak 99709	
ROAD TO TANANA	
61759	
MINOR ALTERNATIVE 1	
FIGURE 23.1.1-3	
DATE	SHEET: 113

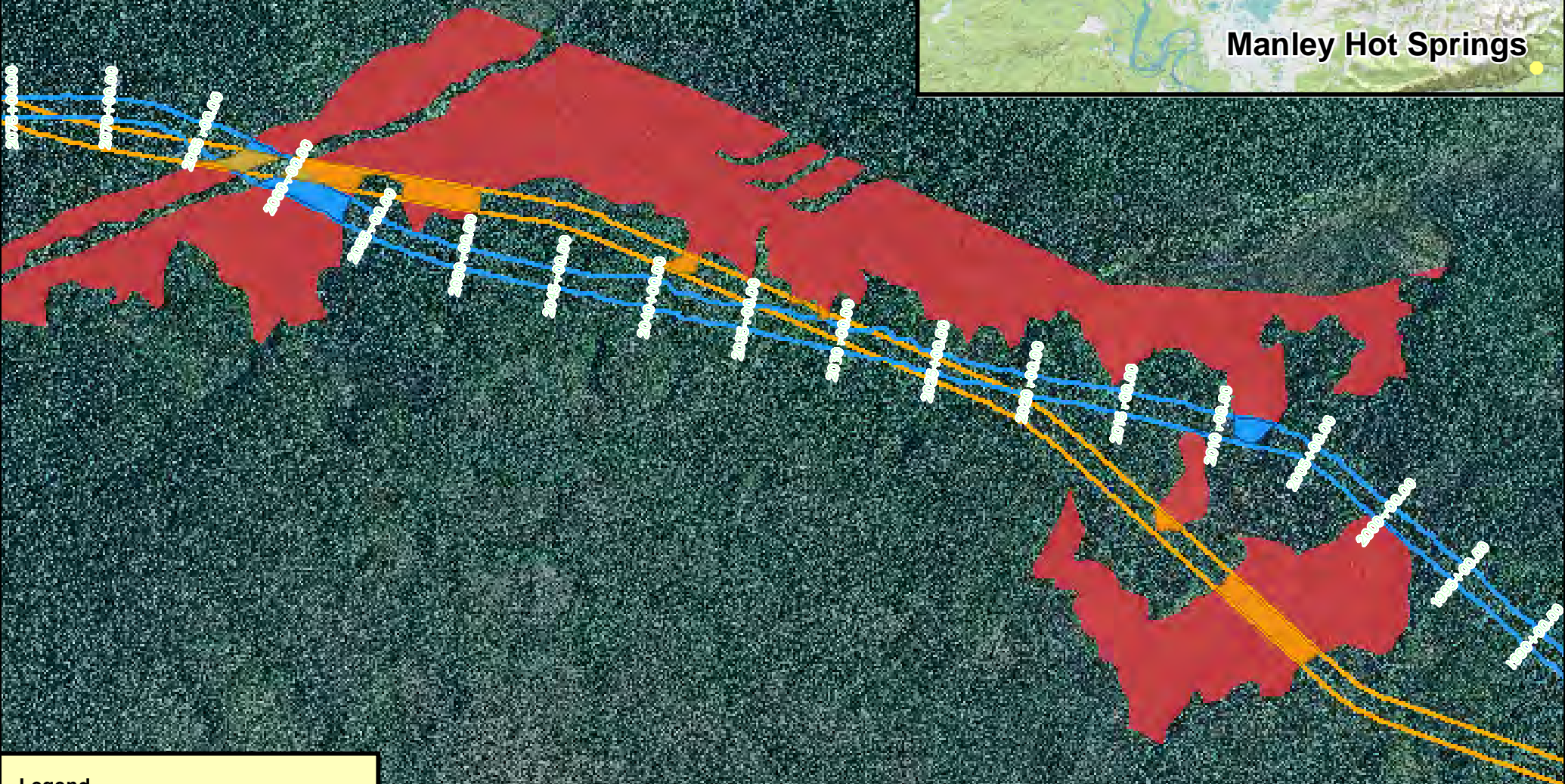


Legend

- Wetlands Impact Areas (Alternative Alignment)
- Wetlands Impact Areas (Preferred Alignment)
- Footprint (Preferred Alignment)
- Footprint (Alternative Alignment)
- Wetland/Upland Mosaic
- Wetland
- Other Waters
- Navigable Waters

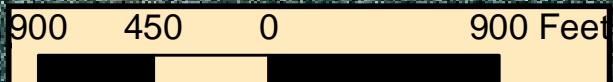


STATE OF ALASKA	
Department of Transportation and Public Facilities	
APPLICANT/AGENT: State of Alaska	
2301 Peger Rd. Fairbanks, Ak 99709	
ROAD TO TANANA	
61759	
MINOR ALTERNATIVE 2	
FIGURE 23.1.1-4	
DATE	SHEET: 114

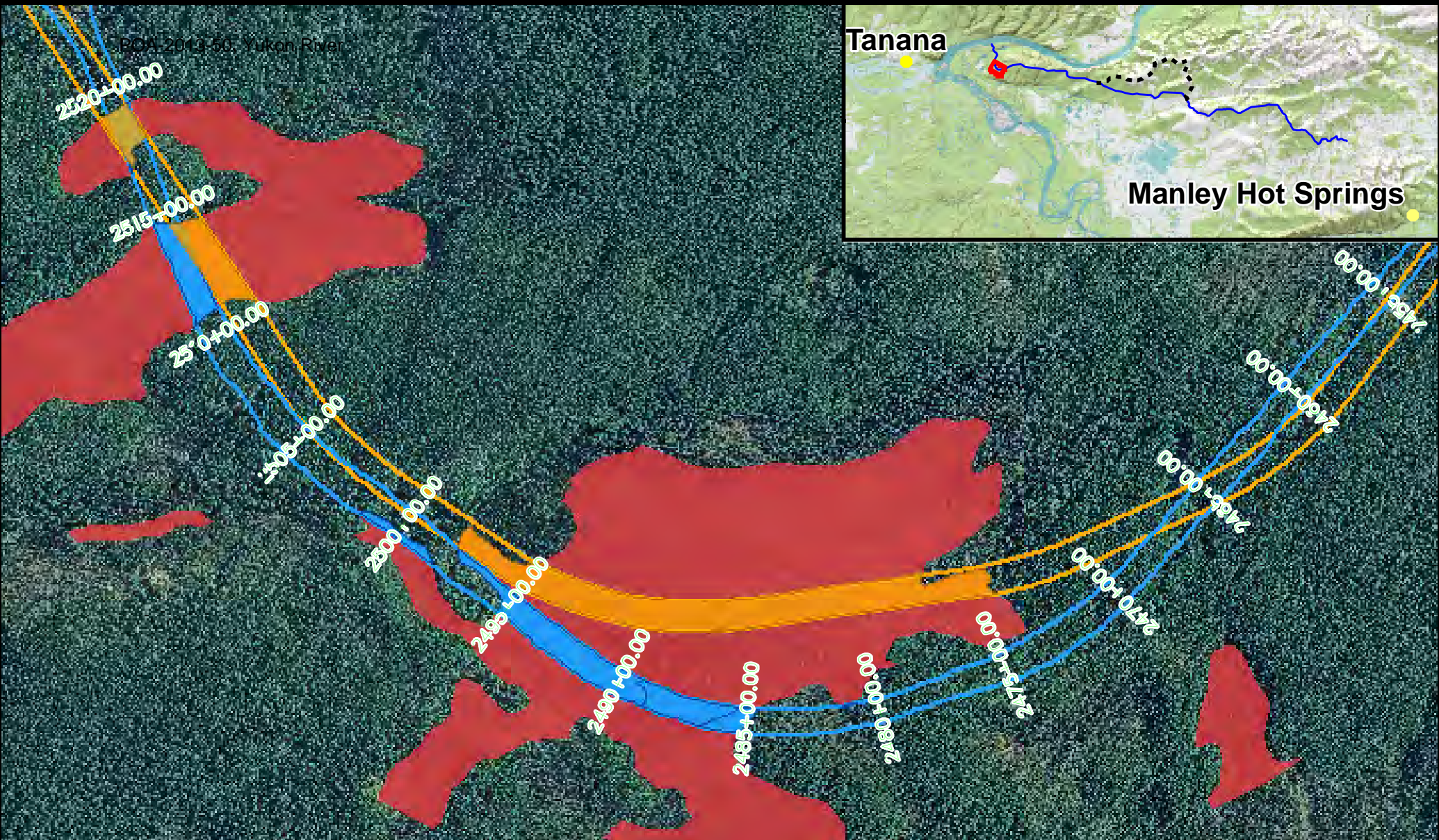


Legend

- Wetlands Impact Areas (Alternative Alignment)
- Wetlands Impact Areas (Preferred Alignment)
- Footprint (Preferred Alignment)
- Footprint (Alternative Alignment)
- Wetland/Upland Mosaic
- Wetland
- Other Waters
- Navigable Waters

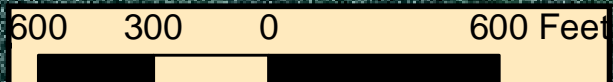


<p>STATE OF ALASKA Department of Transportation and Public Facilities APPLICANT/AGENT: State of Alaska 2301 Peger Rd. Fairbanks, Ak 99709</p>	
<p>ROAD TO TANANA 61759 MINOR ALTERNATIVE 3</p>	
<p>FIGURE 23.1.1-5</p>	
DATE	SHEET: 115



Legend

- Wetlands Impact Areas (Alternative Alignment)
- Wetlands Impact Areas (Preferred Alignment)
- Footprint (Preferred Alignment)
- Footprint (Alternative Alignment)
- Wetland/Upland Mosaic
- Wetland
- Other Waters
- Navigable Waters

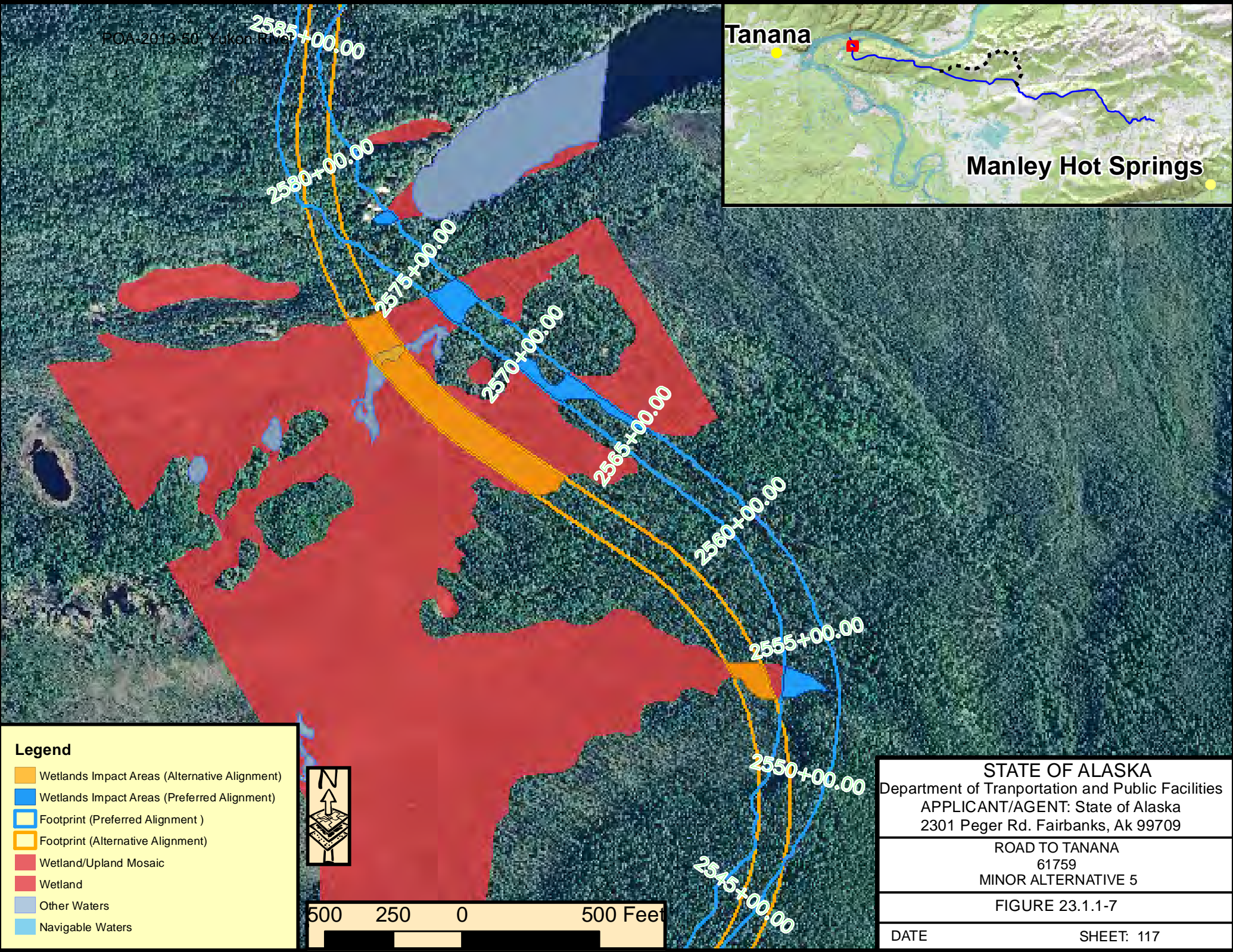


STATE OF ALASKA
 Department of Transportation and Public Facilities
 APPLICANT/AGENT: State of Alaska
 2301 Peger Rd. Fairbanks, Ak 99709

ROAD TO TANANA
 61759
 MINOR ALTERNATIVE 4

FIGURE 23.1.1-6

DATE SHEET: 116



Legend

- Wetlands Impact Areas (Alternative Alignment)
- Wetlands Impact Areas (Preferred Alignment)
- Footprint (Preferred Alignment)
- Footprint (Alternative Alignment)
- Wetland/Upland Mosaic
- Wetland
- Other Waters
- Navigable Waters



STATE OF ALASKA
 Department of Transportation and Public Facilities
 APPLICANT/AGENT: State of Alaska
 2301 Peger Rd. Fairbanks, Ak 99709

ROAD TO TANANA
 61759
 MINOR ALTERNATIVE 5

FIGURE 23.1.1-7

DATE _____ SHEET: 117

EOP MP 49.5

Ridge Bottom
material site dismissed




Boulder Creek
minor changes to material site

Boulder Ridge
material site dismissed

Tofty Gulch
minor changes to material site

BOP MP 15.0

Legend

-  Material Sites Considered
-  Preferred Centerline
-  Wetlands



STATE OF ALASKA
Department of Transportation and Public Facilities
APPLICANT/AGENT: State of Alaska
2301 Peger Rd. Fairbanks, Ak 99709

ROAD TO TANANA
61759
MATERIAL SITE ALTERNATIVES EVALUATED

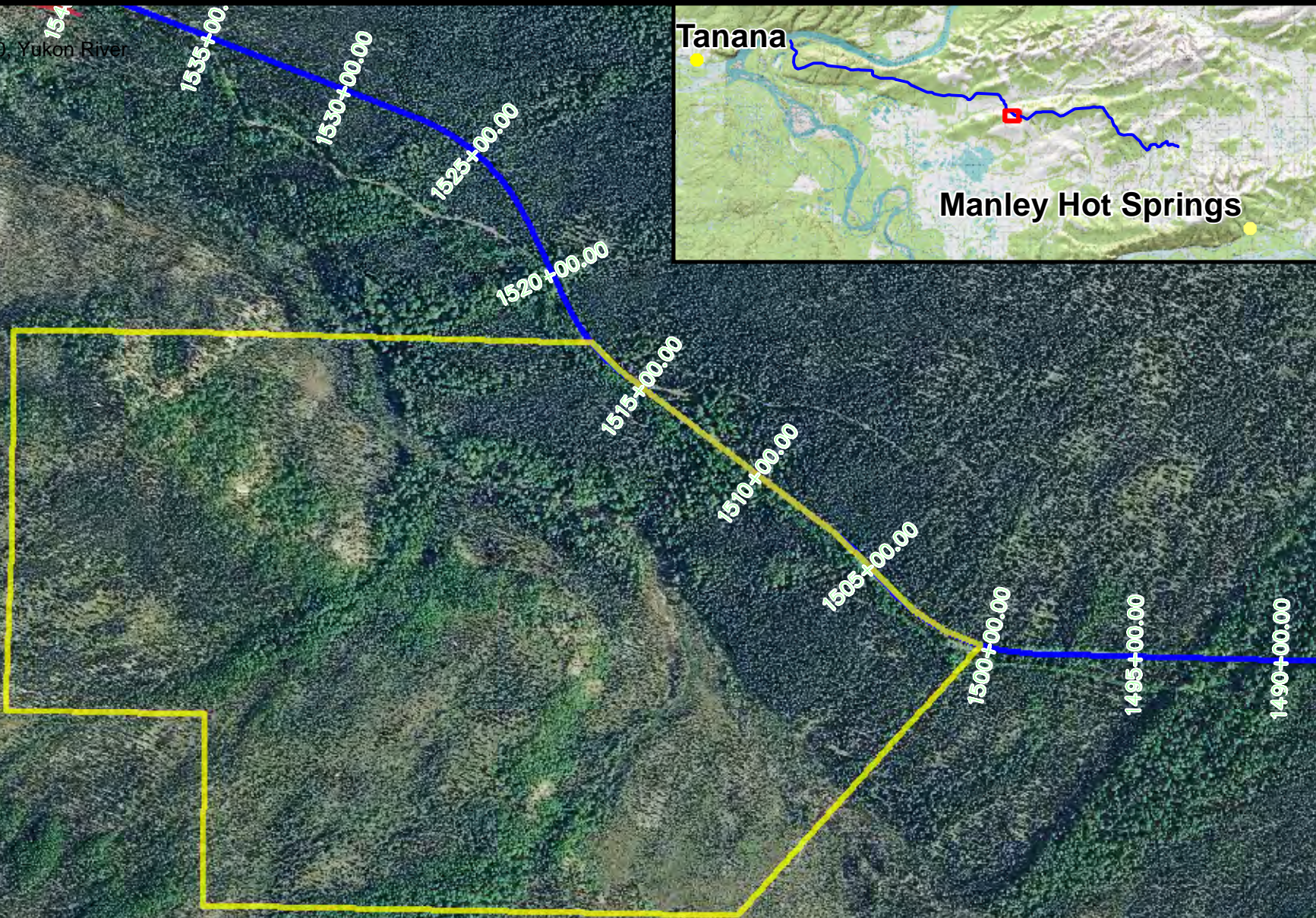
FIGURE 23.1.2-1

DATE SHEET: 118

POA-2013-50, Yukon River

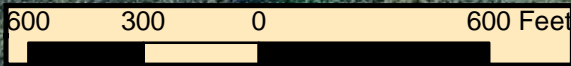
Tanana

Manley Hot Springs

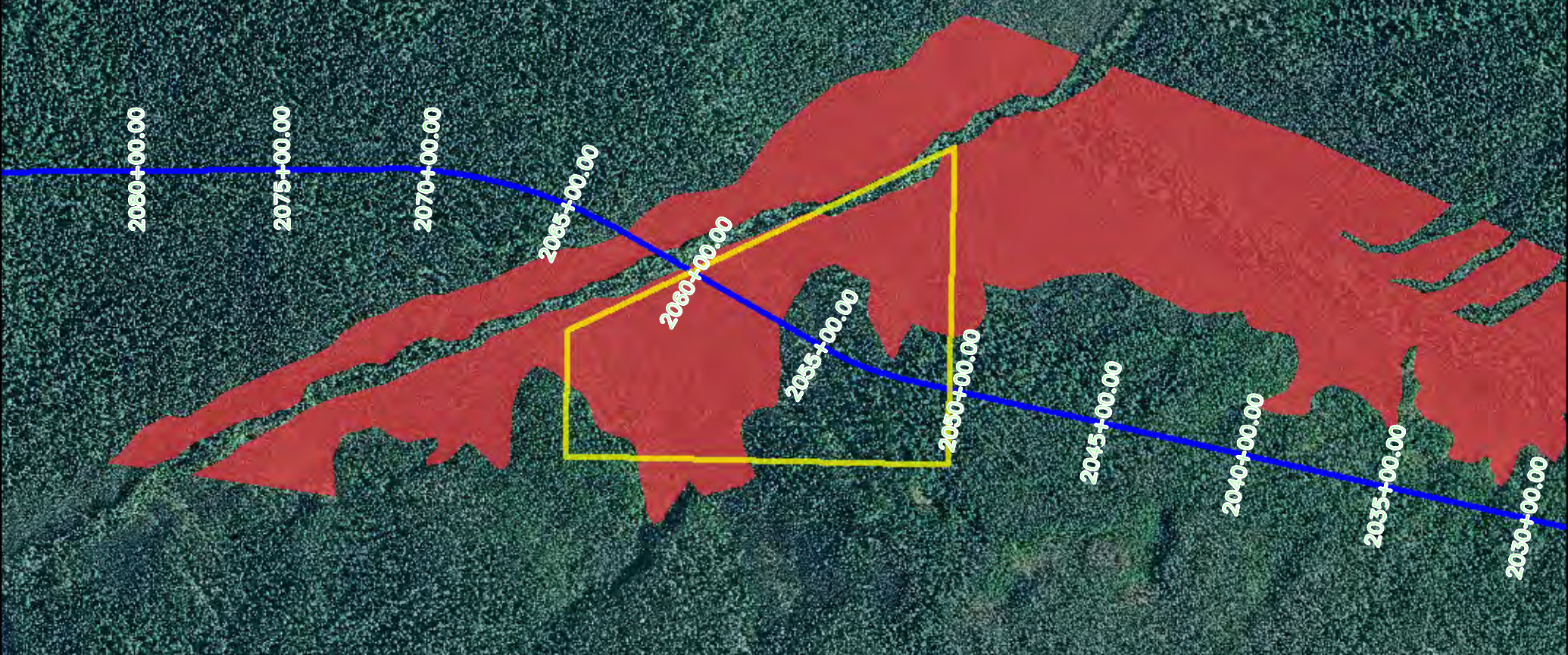


Legend

- Material Site Impact Area (Alternative)
- Preferred Centerline
- Wetland/Upland Mosaic
- Wetland
- Other Waters
- Navigable Waters

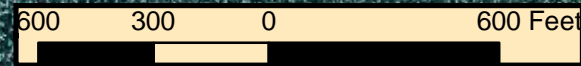


STATE OF ALASKA Department of Transportation and Public Facilities APPLICANT/AGENT: State of Alaska 2301 Peger Rd. Fairbanks, Ak 99709	
ROAD TO TANANA 61759 BOULDER RIDGE MATERIAL SITE	
FIGURE 23.1.2-2	
DATE	SHEET: 119



Legend

- Material Site Impact Area (Alternative)
- Preferred Centerline
- Wetland/Upland Mosaic
- Wetland
- Other Waters
- Navigable Waters



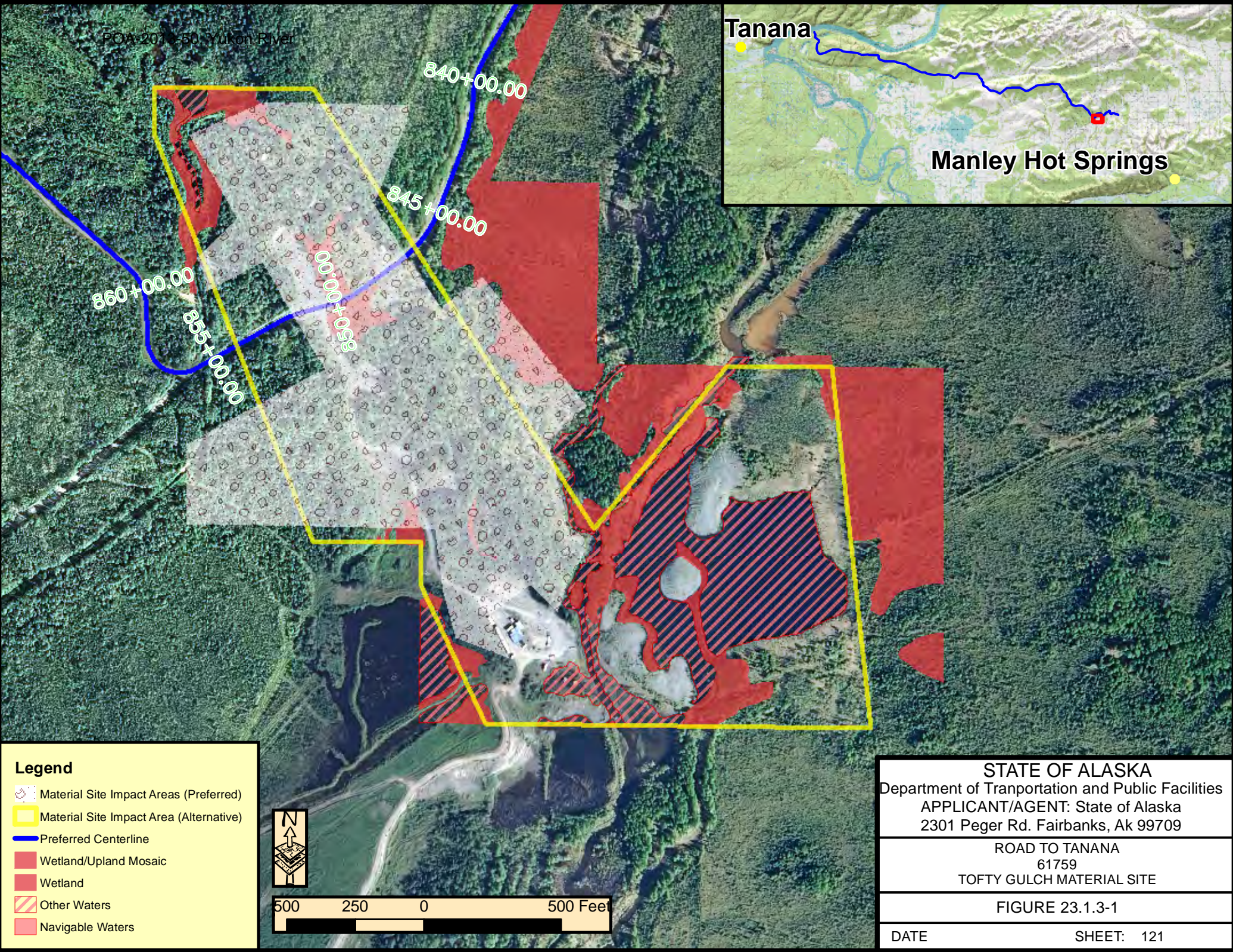
STATE OF ALASKA
 Department of Transportation and Public Facilities
 APPLICANT/AGENT: State of Alaska
 2301 Peger Rd. Fairbanks, Ak 99709

ROAD TO TANANA
 61759
 RIDGE BASE MATERIAL SITE

FIGURE 23.1.2-3

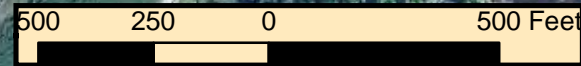
DATE SHEET: 120

POA 207+50, Yukon River



Legend

- Material Site Impact Areas (Preferred)
- Material Site Impact Area (Alternative)
- Preferred Centerline
- Wetland/Upland Mosaic
- Wetland
- Other Waters
- Navigable Waters



STATE OF ALASKA
 Department of Transportation and Public Facilities
 APPLICANT/AGENT: State of Alaska
 2301 Peger Rd. Fairbanks, Ak 99709

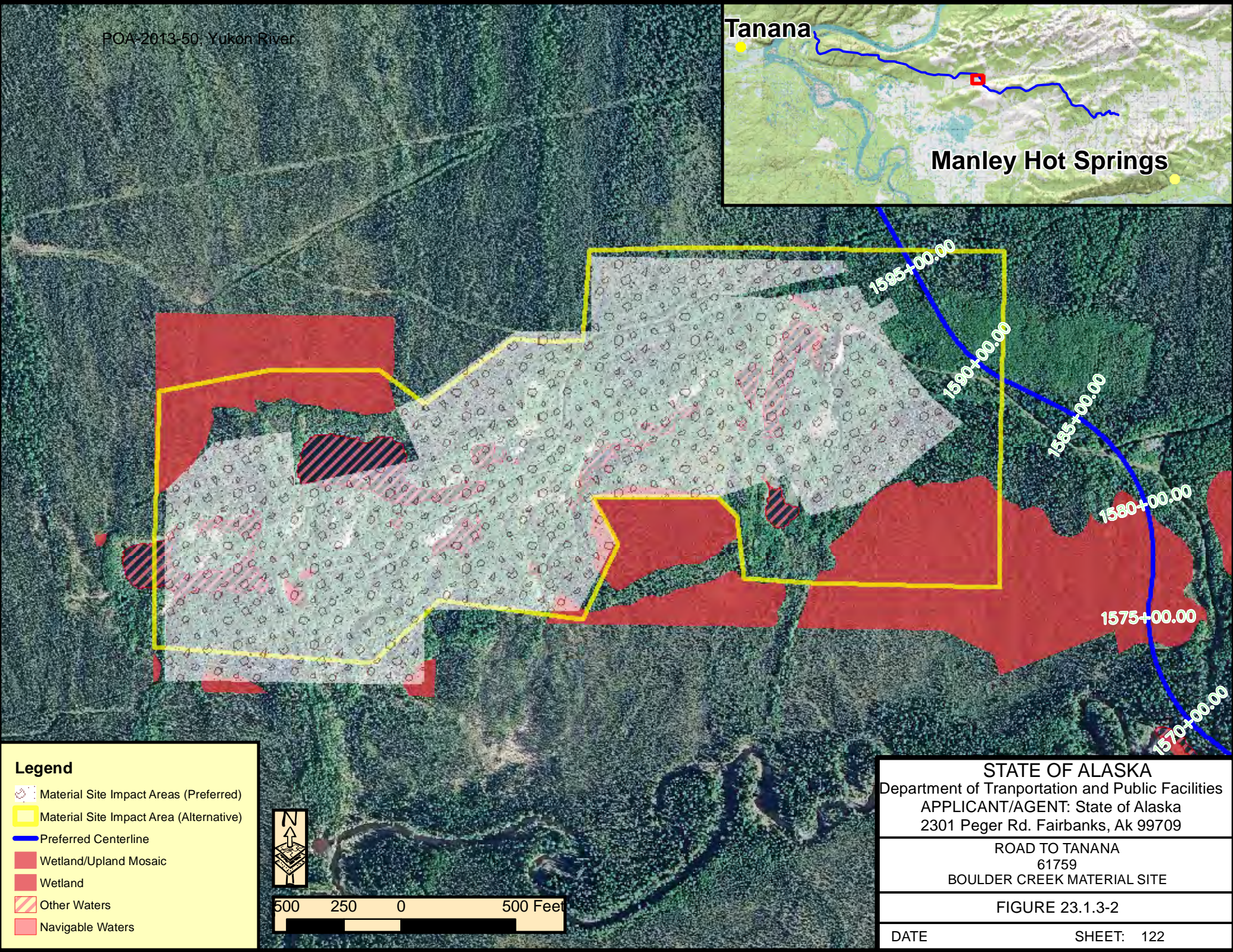
ROAD TO TANANA
 61759
 TOFTY GULCH MATERIAL SITE

FIGURE 23.1.3-1








DATE _____ SHEET: 121

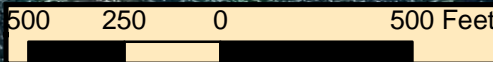
Tanana

Manley Hot Springs



Legend

-  Material Site Impact Areas (Preferred)
-  Material Site Impact Area (Alternative)
-  Preferred Centerline
-  Wetland/Upland Mosaic
-  Wetland
-  Other Waters
-  Navigable Waters



STATE OF ALASKA Department of Transportation and Public Facilities APPLICANT/AGENT: State of Alaska 2301 Peger Rd. Fairbanks, Ak 99709	
ROAD TO TANANA 61759 BOULDER CREEK MATERIAL SITE	
FIGURE 23.1.3-2	
DATE	SHEET: 122